



Motorcycle Tyre
2025 PRODUCT MANUAL

邢台骏联科技有限公司

Xingtai Junlian Technology CO.,LTD.

地址：河北省邢台市襄都区天一港北区18号楼一单元2101
Add : No.2838 shiquan street, industrial park, Liquan street, Gaomi city
电话/Tel: +8615233913099
邮件/Email: junlian01@xt-jl.com
售后服务电话： 15233913099/ 13831949799
网址：www.xt-jl.com

邢台骏联科技有限公司

Xingtai Junlian Technology CO.,LTD.

企业简介/About Us

邢台骏联科技有限公司位于河北省邢台市，主要生产和销售摩托车内外胎以及摩托车配件。公司自成立以来，始终以“为客户创造更大的使用效益”为己任，不断提高产品质量，随着企业不断发展，生产能力日益扩大，我们愿意本着“真诚合作，共同发展”的原则，与国内外朋友真诚合作。

Xingtai Junlian Technology Co., Ltd. is located in Xingtai City, Hebei Province. We are a factory that specialized in manufacturing various kinds of motorcycle tyre, tube and so on.

The products are sold all over the major motorcycle accessories markets and exported to more than 30 regions such as Africa, America and Southeast Asia, winning the favor of business users everywhere. Improve customer satisfaction with modern management, product quality, brand promotion and service. We committed to producing the products which suitable for global market, to creating value for users. we will provide you the best service and proper price as your requires.







以质量求生存 靠信誉求发展



SS-073

120/90-10



SS-073

130/90-10



SS-013

130/90-10



SS-140-1

5.00-12



SS-178

5.00-12



SS-175

80/100-12



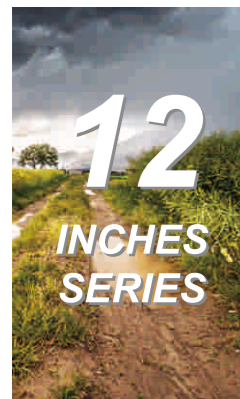
SS-015

90/90-12



SS-089

90/90-12



SS-038

3.00-12



SS-087B

3.75-12



SS-063A

4.00-12



SS-087

4.00-12



SS-174

100/60-12



SS-174

100/70-12



SS-055B

110/70-12



SS-060

120/70-12



SS-068

120/70-12



SS-063B

4.00-12



SS-046

4.50-12



SS-063A

4.50-12



SS-063B

4.50-12



SS-140-1

4.50-12



SS-177

120/70-12



SS-061

130/70-12



SS-069

130/70-12



SS-177

130/70-12



SS-069

140/60-12



SS-046

4.80-12



SS-046

5.00-12



SS-063

5.00-12



SS-063A

5.00-12



SS-113

5.00-12



SS-013

110/90-13



SS-055-1

110/90-13



SS-061

130/60-13



SS-062

130/60-13



以质量求生存 靠信誉求发展



SS-068

130/60-13



SS-177

130/60-13



SS-030

130/60-13



SS-069

130/70-13



SS-069

140/70-13



SS-036

80/90-14



SS-036

90/80-14



SS-115

90/80-14



SS-036

90/90-14



SS-115A

90/90-14



SS-645

150/70-13



SS-175

90/100-14



SS-036

100/70-14



SS-036

100/80-14



SS-036

100/90-14



SS-144

110/70-14



SS-083-1

2.50-14



SS-008

2.75-14



SS-083-1

2.75-14



SS-083-1

3.00-14



SS-144

110/80-14



SS-144

120/70-14



SS-143

120/70-14



SS-144

120/80-14



SS-143

140/70-14



SS-175

60/100-14



SS-115

70/80-14



SS-115

70/90-14



SS-115

80/80-14



SS-115

80/90-14



SS-143A

140/70-14



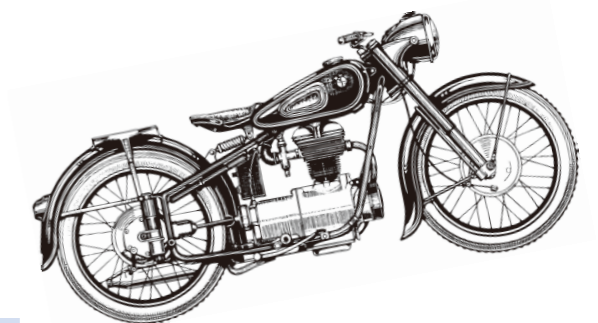
SS-020-1

160/60-14



SS-101

180/80-14





以质量求生存 靠信誉求发展



SS-101 5.00-15 **SS-101B** 5.00-15 **SS-162** 90/80-15 **SS-162** 90/90-15



SS-083 3.50-16 **SS-101B** 4.50/4.75-16 **SS-101** 500-16 **SS-101B** 5.00-16 **SS-101B** 5.00/5.25-16



SS-162 100/90-15 **SS-121** 130/90-15 **SS-032** 150/70-15 **SS-032** 160/60-15 **SS-032** 170/80-15 **SS-101** 170/80-15



SS-101B 6.00-16 **SS-055-1** 70/90-16 **SS-055-1** 80/90-16 **SS-022A** 80/90-16 **SS-146** 90/100-16



SS-055-1 2.50-16 **SS-055-1** 2.75-16 **SS-022A** 2.75-16 **SS-168** 3.00-16



SS-010A 100/80-16 **SS-007** 100/90-16 **SS-010A** 100/90-16 **SS-065** 100/90-16 **SS-083** 100/90-16



SS-022 3.25-16 **SS-022B** 3.25-16 **SS-057** 3.50-16 **SS-010A** 3.50-16 **SS-065** 3.50-16



SS-131 100/90-16 **SS-076** 110/70-16 **SS-007** 110/90-16 **SS-007A加宽** 110/90-16 **SS-010** 110/90-16



以质量求生存 靠信誉求发展



SS-080A加宽
110/90-16



SS-081
110/90-16



SS-037
110/90-16



SS-065
110/90-16



SS-080
110/90-16



SS-065
120/90-16



SS-080
120/90-16



SS-083
120/90-16



SS-128-1
120/90-16



SS-129
120/90-16



SS-010B
110/90-16



SS-010C
110/90-16



SS-083
110/90-16



SS-090
110/90-16



SS-119
110/90-16



SS-161
120/90-16



SS-119
120/90-16



SS-161
130/80-16



SS-081
130/90-16



SS-081-1
130/90-16



SS-123-1
110/90-16



SS-123A加宽
110/90-16



SS-126-1
110/90-16



SS-128-1
110/90-16



SS-129
110/90-16



SS-067A
2.25-17



SS-067C
2.25-17



SS-001
2.50-17



SS-003A
2.50-17



SS-018
110/90-16



SS-035B
110/90-16



SS-119
120/70-16



SS-119
120/80-16



SS-161
120/80-16



SS-06KE
2.50-17



SS-010A
2.50-17



SS-012
2.50-17



SS-024
2.50-17



SS-033
2.50-17



以质量求生存 靠信誉求发展



SS-042

2.50-17



SS-047

2.50-17



SS-057

2.50-17



SS-067A

2.50-17



SS-075

2.50-17



SS-075A

2.75-17



SS-094

2.75-17



SS-095

2.75-17



SS-116

2.75-17



SS-003B

2.75-17



SS-082

2.50-17



SS-103

2.50-17



SS-001

2.75-17



SS-003A

2.75-17



SS-06KE

2.75-17



SS-007-1

2.75-17



SS-017

2.75-17



SS-001A

2.75-17



SS-116A

2.75-17



SS-057

2.75-17



SS-010A

2.75-17



SS-012

2.75-17



SS-019A

2.75-17



SS-022

2.75-17



SS-024

2.75-17



SS-094A

2.75-17



SS-035B

2.75-17



SS-003

3.00-17



SS-003A

3.00-17



SS-005

3.00-17



SS-042

2.75-17



SS-042A

2.75-17



SS-047

2.75-17



SS-067A

2.75-17



SS-067B

2.75-17



SS-006A

3.00-17



SS-007-1

3.00-17



SS-009

3.00-17



SS-012A

3.00-17



SS-020

3.00-17



以质量求生存 靠信誉求发展



SS-022

3.00-17



SS-025

3.00-17



SS-032

3.00-17



SS-039

3.00-17



SS-040

3.00-17



SS-006

3.00-17



SS-170

3.00-17



SS-171

3.00-17



SS-057

3.00-17



SS-1143

3.00-17



SS-041

3.00-17



SS-042

3.00-17



SS-060-1

3.00-17



SS-066

3.00-17



SS-067A

3.00-17



SS-035B

3.00-17



SS-034

3.50-17



SS-035B

3.50-17



SS-101A

4.00-17



SS-034

4.00-17



SS-072A

3.00-17



SS-080

3.00-17



SS-084

3.00-17



SS-094A

3.00-17



SS-095

3.00-17



SS-101B

4.00/4.25-17



SS-034

4.10-17



SS-101

4.50-17



SS-101B

4.50-17



SS-035B

4.60-17



SS-004

3.00-17



SS-127

3.00-17



SS-131

3.00-17



SS-145

3.00-17



SS-150

3.00-17



SS-109

4.60-17



SS-110

4.60-17



SS-101

5.00-17



SS-115

60/80-17



SS-067C

60/100-17



以质量求生存 靠信誉求发展



SS-115A
60/100-17



SS-115
70/80-17



SS-116
70/80-17



SS-151
70/90-17



SS-075
70/90-17



SS-055-1
100/90-17



SS-080
100/90-17



SS-081
100/90-17



SS-105
100/90-17



SS-125
100/90-17



SS-116
70/90-17



SS-115B
70/100-17



SS-115
80/80-17



SS-151
80/90-17



SS-075A
80/90-17



SS-091
110/70-17



SS-018
110/70-17



SS-071
110/80-17



SS-105
110/80-17



SS-122-1
110/80-17



SS-115
80/90-17



SS-115
90/80-17



SS-075A
90/80-17



SS-092
90/90-17



SS-093
90/90-17



SS-020
110/90-17



SS-034
110/90-17



SS-080
110/90-17



SS-150
110/90-17



SS-105
120/70-17



SS-105
90/90-17



SS-017
90/90-17



SS-056-1
100/80-17



SS-020
100/90-17



SS-034
100/90-17



SS-143
120/70-17



SS-018
120/70-17



SS-105
120/80-17



SS-143
120/80-17



SS-031
130/70-17



以质量求生存 靠信誉求发展



SS-109

130/70-17



SS-143

130/70-17



SS-077

130/80-17



SS-077A

130/80-17



SS-078

140/60-17



SS-033

2.50-18



SS-067A

2.50-18



SS-067B

2.50-18



SS-075

2.50-18



SS-109

140/60-17



SS-078

140/70-17



SS-143A

140/70-17



SS-144

150/70-17



SS-144

150/80-17



SS-075A

2.50-18



SS-170

2.50-18



SS-007-1

2.75-18



SS-020

2.75-18



SS-033

2.75-18



SS-144

160/60-17



SS-144

160/70-17



SS-144

160/80-17



SS-079

180/50-17



SS-079

180/55-17



SS-042B

2.75-18



SS-057

2.75-18



SS-059

2.75-18



SS-067A

2.75-18



SS-067B

2.75-18



SS-097

190/50-17



SS-097

190/55-17



SS-097

200/50-17



SS-097

200/55-17



SS-075A

2.75-18



SS-080

2.75-18



SS-080-1

2.75-18



SS-085A

2.75-18



SS-086

2.75-18



以质量求生存 靠信誉求发展



SS-086A

2.75-18



SS-094A

2.75-18



SS-095

2.75-18



SS-116

2.75-18



SS-012A

2.75-18



SS-020

3.00-18



SS-022

3.00-18



SS-023

3.00-18



SS-024

3.00-18



SS-039

3.00-18



SS-017

2.75-18



SS-035B

2.75-18



SS-047

2.75-18



SS-012

2.75-18



SS-022

2.75-18



SS-040

3.00-18



SS-041

3.00-18



SS-042

3.00-18



SS-057

3.00-18



SS-059

3.00-18



SS-003

3.00-18



SS-004-1

3.00-18



SS-005

3.00-18



SS-006

3.00-18



SS-006A

3.00-18



SS-060-1

3.00-18



SS-067A

3.00-18



SS-072A

3.00-18



SS-080

3.00-18



SS-084

3.00-18



SS-007-1

3.00-18



SS-009

3.00-18



SS-010A

3.00-18



SS-012

3.00-18



SS-012A

3.00-18



SS-094

3.00-18



SS-172

3.00-18



SS-1141

3.00-18



SS-1142

3.00-18



SS-1143

3.00-18



以质量求生存 靠信誉求发展



SS-145

3.00-18



SS-035B

3.00-18



SS-029

3.00-18



SS-126-1

3.00-18



SS-127

3.00-18



SS-020

4.10-18



SS-035B

4.10-18



SS-022

4.10-18



SS-056A

4.10-18



SS-110

4.10-18



SS-131

3.00-18



SS-029

3.25-18



SS-062-1

3.25-18



SS-127

3.25-18



SS-101B

3.25-18



SS-120

4.10-18



SS-131

4.10-18



SS-101

4.50-18



SS-110

4.60-18



SS-056A

4.60-18



SS-012A

3.25-18



SS-027

3.25-18



SS-026

3.50-18



SS-027

3.50-18



SS-057

3.50-18



SS-035B

4.60-18



SS-009

90/90-18



SS-028

90/90-18



SS-029

90/90-18



SS-045

90/90-18



SS-080

3.50-18



SS-101

3.50-18



SS-127

3.50-18



SS-163

3.60-18



SS-101

4.00-18



SS-117

90/90-18



SS-124-1

90/90-18



SS-127

90/90-18



SS-176

90/90-18



SS-018

90/90-18



以质量求生存 靠信誉求发展



SS-059

90/90-18



SS-018

100/90-18



SS-021

100/80-18



SS-105

100/80-18



SS-117

100/80-18



SS-159

110/100-18



SS-169

120/80-18



SS-110

120/90-18



SS-145

120/90-18



SS-154

120/90-18



SS-021

100/90-18



SS-056B

100/90-18



SS-105

100/90-18



SS-110

100/90-18



SS-117

100/90-18



SS-155

120/90-18



SS-156

120/90-18



SS-157

120/90-18



SS-159

120/90-18



SS-056B

120/100-18



SS-056A

110/90-18



SS-061-1

110/90-18



SS-160

110/90-18



SS-056B

110/100-18



SS-145

110/100-18



SS-145

120/100-18



SS-154

120/100-18



SS-155

120/100-18



SS-156

120/100-18



SS-157

120/100-18



SS-147

110/100-18



SS-154

110/100-18



SS-155

110/100-18



SS-156

110/100-18



SS-157

110/100-18



SS-159

120/100-18



SS-179

130/80-18



SS-048

130/90-18



SS-179

140/70-18



SS-100

140/80-18



以质量求生存 靠信誉求发展



SS-100B
140/80-18



SS-156
140/80-18



SS-158
140/80-18



SS-026A
90/90-19



SS-009
90/90-19



SS-146
100/90-19



SS-147
110/100-19



SS-017
110/90-19



SS-035B
2.75-19



SS-101
3.25-19



SS-026A
3.00-19



SS-035B
3.00-19



SS-152
100/90-19



SS-146
110/90-19



SS-152
110/90-19



SS-159
110/90-19



SS-003A
3.75-19



SS-101
4.00-19



SS-101
4.50-19



SS-167
70/100-19



SS-080-1
80/90-19



SS-133
3.00-20



SS-132
500X180-250



SS-074
80/90-19



SS-080-1
80/100-19



SS-074
80/100-19



SS-188
80/100-19



SS-080-1
90/90-19



SS-014
2.75-21



SS-056A
2.75-21



SS-074
2.75-21



SS-035B
2.75-21



以质量求生存 靠信誉求发展



SS-022

3.00-21



SS-074

3.00-21



SS-173

3.00-21



SS-035B

3.00-21



SS-067B

3.00-21



SS-106

16x3.0
16x2.50
16x2.125
18x2.50



SS-108

16x3.0
16x2.50
16x2.125
14x2.125



SS-112

16x3.0
16x2.50
16x2.125
14x2.125



SS-056A

80/100-21



SS-074

80/100-21



SS-188

80/100-21



SS-080-1

90/90-21



SS-074

90/90-21



SS-074A

90/90-21



SS-153

90/90-21



SS-173

90/90-21



SS-056A

90/100-21



SS-074

90/100-21



SS-153

90/100-21



SS-173

90/100-21



外胎包装/TYRE PACKING





以质量求生存 靠信誉求发展

内胎包装/TUBE PACKING



气门咀型号/VALVES





内胎型号列表

内胎规格 Size of Tube	气门咀型号 Model of valves	内胎规格 Size of Tube	气门咀型号 Model of valves	内胎规格 Size of Tube	气门咀型号 Model of valves
3.00-8	TR87	2.50/2.75-16	TR4	3.75-19	TR4
3.50/4.00-8	TR87	3.00-16	TR4	2.50-19	TR4
4.80/4.00-8	TR87	3.25/3.50-16	TR4	2.75/3.00-19	TR4
4.80/4.00-8	TR13	3.50-16	TR4	3.25/3.50-19	TR4
3.00-10	TR87	110/90-16	TR4	2.75/3.00-21	TR4
3.50-10	TR87	120/130/90-16	TR13	16*3.00	CR202
4.00/4.50-10	TR13	4.00/4.50-16	TR4	16*2.50/2.70	CR202
120/130/90-10	TR87	1.85/2.00/2.25-17	TR4	16*2.125	CR202
3.00-12	TR4/TR87	2.25-17	TR4	18*2.125	CR202
4.00/4.50-12	TR13	2.25/2.50-17	TR4	18*2.5	CR202
5.00-12	TR13	2.50-17	TR4	26*1 1/2	TR1
120/130/70-12	TR87	2.75-17	TR4	28*1 1/2	TR1
3.50/3.75-12	TR13	2.75/3.00-17	TR4	27/28*3.25/3.5	TR4
110/90-13	TR87	3.00-17	TR4	60/80-17	TR4
130/60-13	TR87	3.50-17	TR4	70/80-17	TR4
155/165-13	TR13	4.00/4.10-17	TR4	90/80-17	TR4
2.00-14	TR4	4.00/4.50-17	TR4	60/90-17	TR4
2.25-14	TR4	2.50-18	TR4	70/90-17	TR4
2.25/2.50-14	TR4	2.50/2.75-18	TR4	80/90-17	TR4
2.75-14	TR4	2.75-18	TR4	90/90-17	TR4
2.75/3.00-14	TR4	2.75/3.00-18	TR4	60/90-18	TR4
3.00-14	TR4	3.00-18	TR4	70/90-18	TR4
4.50/5.00-14	TR13	3.25-18	TR4	80/90-18	TR4
5.50/5.00-14	TR13	3.50-18	TR4	90/90-18	TR4
130/90-15	TR4	4.10-18	TR4	60/100-17	TR4
2.25/2.50-16	TR4	4.60-18	TR4		



Tread cut wounds
Tire surface cut wounds by external things



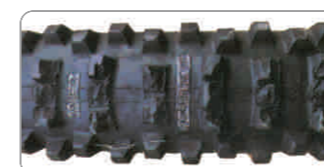
Tire surface damage
Tires stuck sharp objects, do strong traction action and damage. Commonly occurring in the back tire.



Tire lip lesion (by pry bars)
Improper operation when tires and rims assembly, causing tire labial ministry picked great damage



Tire lip lesion (Machinery installation tires)
Improper operation when tires and rims assembly, Causing tire labial ministry damage by tires machine, unloading tires machine



Tread fall off
The special tires suit for sand, muddy, was applied to hard pavement. Cut wounds by stones or sharp objects, produce tread fall off.



Tread bottom cracking
Tires running with low air pressure long time, killing tread bottom



Tire lip damage bending
Tires lip bending were caused by external extrusion



Tire lip wire break
When tire and tire rims engage with discomfort state, tire was forced by high-pressure air injected, causing stress concentration in discomfort joint place ,making wire at tire lip broke.



Abnormal abrasions (one side)
Faults on vehicle parts, cause tires unilateral abrasion.



Abnormal abrasions (polygonal)
Faults on vehicle parts, cause tires polygonal abrasion.



Tire lip wire break (X-ray)
When tire and tire rims engage with discomfort state, tire was forced by high-pressure air injected, causing stress concentration in discomfort joint place ,making wire at tire lip broke.



Wrapped drape inside
Tires run with low air pressure, causing tire body buckling and chicken claw marks on inside face.



Tire shoulder pattern cracked
Tires running with low air pressure long time, killing tire shoulder pattern parts and tire, cause tire shoulder cracked.



Tire shoulder scratches
Mutual friction between vehicle parts and tire, cause tire shoulder scratches



Sandwiched eyewinker



Sandwiched eyewinker
When assembly tire, there's sandwiched eyewinker between inner tubes and tires which not been clear, causing damages on tire and inner tube.



Yarn was breaking by slams (out)
When tire in low air pressure condition go through the pavement dent or obstacles, tires bear thumping excessive force, causing tire body cotton/yarn was cut off by the wheel rim.



Mouse bites
Because of tire store improper, tire was bitten by the mice



Pierced cause yarn breaking
When pierce things was not taken out after tyre was pierced, tyre continue to run, leading to pierce content damage tire body.